

A New Rotifer Species for Turkish Inland Waters

Zeynep DORAK*, Meriç ALBAY

Istanbul University, Fisheries Faculty, Department of Freshwater Biology, 34130 Laleli, Istanbul-Turkey

ABSTRACT

The zooplankton fauna of Lake Sapanca (Turkey) was studied during January 2009-May 2010 of monthly intervals. One Rotifera species, *Ploesoma truncatum* (Levander, 1894) is a new record for the Turkish inland waters fauna.

Key words: Zooplankton, rotifera, *Ploesoma truncatum*, Turkey, Lake Sapanca

ARTICLE INFO

SHORT COMMUNICATION

Received : 19.05.2015

Revised : 24.06.2015

Accepted : 25.06.2015

Published : 28.08.2015



DOI: 10.17216/LimnoFish-5000119313

* CORRESPONDING AUTHOR

zdorak@gmail.com

Tel : +90 212 455 57 00

Fax: +90 212 514 03 79

Türkiye İçsuları için Yeni Bir Rotifer Türü

Öz: Sapanca Gölü (Türkiye)'nün zooplankton faunası Ocak 2009-Mayıs 2010 döneminde aylık aralıklarla incelenmiştir. Bir Rotifera türü, *Ploesoma truncatum* (Levander, 1894), Türkiye içsuları faunası için yeni kayıttır.

Anahtar kelimeler: Zooplankton, rotifera, *Ploesoma truncatum*, Türkiye, Sapanca Gölü

How to Cite

Dorak Z, Albay M. 2015. A New Rotifer Species for Turkish Inland Waters. LimnoFish. 1(2):89-94. doi: 10.17216/LimnoFish-5000119313

Introduction

Studies about the Rotifera of Turkish inland waters began at the beginning of the 1900s with Daday (1903) and Vavra (1905). Then, a few works have been done up to the 1970's (Zederbauer and Brehm 1907; Mann 1940; Geldiay 1949; Hauer 1957). Since 1970's many studies have been carried out on Rotifera fauna of various localities of Turkey, (e.g., Margaritora and Cottorelli 1970; Geldiay and Tareen 1972; Tokat 1975; Tokat 1976; Margaritora et al. 1977; Ustaoglu 2004).

In last decades, many new record of Rotifera species were added to Turkish fauna (Altındağ et al. 2005; Kaya et al. 2008; Altındağ et al. 2009; Kaya et al. 2009; Kaya and Altındağ 2009; Bekleyen et al. 2011). Finally, Ustaoglu et al. (2012) collected all studies up to 2012 in a paper. However, the studies on zooplankton fauna of Lake Sapanca is limited.

Tokat (1975) found only 5 taxa, Ongan (1982) recorded 9 taxa and Rahe and Worthmann (1985) reported only 8 taxa of Rotifera species, in Lake Sapanca (Table 1). On the other hand, Okgerman (2008) conducted a detailed study and identified 35 taxa of Rotifera in the Lake (Table 1). *Ploesoma* was detected in the lake only in genus level (Table 1). Also, another member of aforementioned genus, which named *Ploesoma hudsoni* (Imhof 1891), was recorded in Lake Gala, when lake was still under oligotrophic conditions (DSI 1986; Segers et al. 1992). However, there is not any record about the *Ploesoma truncatum* (Levander 1894) in Turkish lakes.

Materials and Methods

In this study, Rotifera fauna has been studied in oligomesotrophic Turkish lake, Lake Sapanca between January 2009 and May 2010. Samples couldn't be taken in April 2010. It is located in the

northeast of the Marmara region of Turkey (40°41'N to 40°44'N and 30°09'E to 30°20' E) (Figure 1). It is a tectonic lake with an area of 46.8 km², and 250 km² basin. Its maximum depth is 55 m, whereas mean depth is 26 m. Lake Sapanca is a warm monomictic. In general, thermal stratification occur between late April and mid November. Its primary water sources are small rivers and groundwater (DSI, 1998). Lake Sapanca is a source of drinking water of Adapazarı and Kocaeli cities (Albay et al. 2003; Akçaalan et al. 2007).

The samples were collected by using a plankton net with 55 µm mesh size from two stations vertically during January 2009-May 2010 of monthly intervals. The samples were transferred to the polyethylene bottles and fixed with 4% formaldehyde solution. Rotifera species examination and counting (%N) were done using Nikon ECLIPSE TS100 inverted microscope. Identifications of Rotifera species were performed under Nikon mark YS100 model stereomicroscope. The diluted sodium hypochlorite was used to extract the trophi of species. To identify the species of Rotifera following references were reviewed: Kolisko (1974), Koste (1978), Pontin (1978), and Hollowday (2002). Water temperature, pH, conductivity and Dissolved Oxygen were measured in situ by using YSI 650 MDS Multi-parameter instrument.

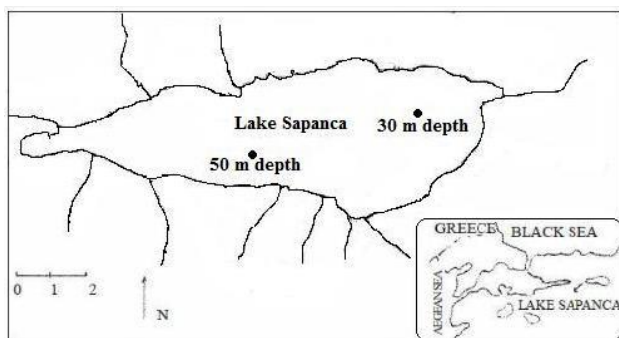


Figure 1. Location of the Lake Sapanca and sampling stations.

Results

P. truncatum is a loricate species (Figure 2). The head-plate of the specimen has small indentations dorsally, and it looks like almost straight. Also, this part seems a broad tongue if the caudal part is lifted. On the posterior of the dorsal antenna, crosswise ridges and borders are found. There are many longitudinal ridges on the surface of the shell, and they occurs a decisive triangle on the dorsal view of the specimen. The foot is partially annular in the upper reach. Its length of body, foot, and toe are 120-160; 70-80, and 25-32 µm, respectively (Hollowday 2002).

According to the data obtained over the entire

study, *P. truncatum* was represented 1.83% of total zooplankton abundance, and 2.39% of total Rotifera abundance. High numbers of *P. truncatum* was determined in May 2010 (12.16% of total zooplankton abundance, and 12.37% of total Rotifera), whereas low abundance was established in cold months. Also, the assessment of the frequency of *P. truncatum* was done according to Koste and Terlutter (2001) (Table 2).

Discussion

Rotifera fauna will be given in another manuscript (Dorak et al. not publish yet). In the present study we present the first record of *P. truncatum* from Lake Sapanca (Turkey) (Figure 2). The taxonomical hierarchy of *P. truncatum* are given in below.

Phylum: Rotifera Cuvier, 1817

Class: Eurotatoria De Ridder, 1957

Subclass: Monogononta Plate, 1889

Superorder: Pseudotrocha Kutikova, 1970

Order: Ploima Hudson and Gosse, 1886

Family: Synchaetidae Hudson and Gosse, 1886

Genus: Ploesoma Herrick, 1885

Ploesoma truncatum (Levander, 1894)

This specimen is widely distributed Afrotropical, Australian, Nearctic, Neotropical and Palearctic regions around the world. *P. truncatum* is reported as thermophilic specimen (Koste 1978), and its embryonic development occurs at high temperatures, and this period continues for a long time (Edmondson 1960). *P. truncatum* was reported from various areas in the world including; Russia (Telesh 1995), Canada (Swadling et al. 2000), China (Lin et al. 2003; Zhaou et al. 2009), South America (Bonecker et al. 2005, 2009), Serbia (Cadjjo et al. 2007), Greece (Doulka and Kehayias 2008; Kehayias et al. 2008), and North America (Barbiero and Warren 2011), except Turkey which is located in Palearctic region. Also, it has been a subject of several studies (e.g. Sudzuki et al. 1983; Molloy et al. 2014).

P. truncatum live in open waters of oligotrophic, ultraoligotrophic and mesotrophic lakes and ponds (Koste 1982). It was reported by Sládeček (1983) as an oligosaprobic specimen. Lake Sapanca is an oligomesotrophic lake with a clear water (Akçaalan et al. 2007). Some physicochemical characteristics of lake are given in Table 3. *P. truncatum* reached to high numbers in warm month (May 2010), when the water temperature was between 12.04-14.54 °C in Lake Sapanca (Table 2 and Table 3). Many authors were reported that the abundance of *P. truncatum*

positively correlated with water temperature (Swadling et al. 2000; Doulka and Kehayias 2008; Kehayias et al. 2008).

As a result, taxonomic studies are important to determine the biodiversity, and a new record for Turkish Rotifera fauna was added with this study.

Table 1. The Rotifera fauna of Lake Sapanca, according to the previous studies.

Taxon	Tokat (1975)	Ongan (1982)	Rahe and Worthmann (1985)	Okgerman (2008)
<i>Anuraeopsis fissa</i> Gosse, 1851				*
<i>Ascomorpha ecaudis</i> Petry, 1850				*
<i>A. saltans</i> Bartsch, 1870				*
<i>Asplanchna priodonta</i> Gosse, 1850				*
<i>A. sieboldi</i> (Leydig, 1854)				*
<i>Asplanchna</i> sp.		*	*	
<i>Brachionus angularis</i> Gosse, 1851				*
<i>B. calyciflorus</i> Pallas, 1766				*
<i>B. plicatilis</i> O.F. Müller, 1786				*
<i>Brachionus</i> sp.		*	*	
<i>Cephalodella catellina</i> (O.F. Müller, 1786)				*
<i>Colurella adriatica</i> Ehrenberg, 1831				*
<i>C. colurus</i> (Ehrenberg, 1830)				*
<i>C. uncinata</i> (Müller, 1773)				*
<i>Colurella</i> sp.			*	
<i>Conochilus</i> sp.		*		
<i>Euchlanis dilatata</i> Ehrenberg, 1832				*
<i>Filinia terminalis</i> (Plate, 1886)				*
<i>Gastrops sutyliifer</i> (Imhof, 1891)				*
<i>Hexarthra mira</i> (Hudson, 1871)	*			
<i>Kellicotia</i> sp.		*	*	
<i>Keratella cochlearis</i>	*	*		*
<i>K. quadrata</i> (Müller, 1786)	*	*		*
<i>K. tropica</i> (Apstein, 1907)				*
<i>Keratella</i> sp.			*	
<i>Lecane luna</i> (O.F. Müller, 1776)				*
<i>L. lamellata</i> (Daday, 1893)				*
<i>Lepadella patella</i> (O.F. Müller, 1773)				*
<i>Lepadella</i> sp.				*
<i>Mytilina mucronata</i> (O.F. Müller, 1773)				*
<i>Notholca acuminata</i> (Ehrenberg, 1832)				*
<i>N. squamula</i> (O.F. Müller, 1786)				*
<i>N. labis</i> (Gosse, 1887)				*
<i>Pleosoma</i> sp.	*	*		*
<i>Polyarthra dolichoptera</i> Idelson, 1925	*			*
<i>P. remata</i> Skorikov, 1896				*
<i>P. vulgaris</i> (Carlin, 1943)				*
<i>Polyarthra</i> sp.		*	*	
<i>Rotaria</i> sp.			*	
<i>Synchaeta oblonga</i> Ehrenberg, 1832				*
<i>S. pectinata</i> (Ehrenberg, 1832)				*
<i>Squatinella mutica</i> (Ehrenberg, 1832)				*
<i>Trichocerca cylindrica</i> (Imhof, 1891)				*
<i>Trichocerca</i> sp.		*	*	
<i>Trichotria pocillum</i> (O.F. Müller, 1776)				*

Table 2. Monthly presence of *P. truncatum* in Lake Sapanca.

	Jan-09	Feb-09	Mar-09	Apr-09	May-09	Jun-09	Jul-09	Aug-09	Sep-09	Oct-09	Nov-09	Dec-09	Jan-10	Feb-10	Mar-10	May-10
<i>P. truncatum</i>	-	-	-	r	r	r	-	l	r	f	vo	vo	l	f	r	a
(1: for once; r=rare: 2-5 individuals; c = common : 6-10 individuals; f = frequent: 11-20 individuals; vo = very often: up to 50 individuals; a = abundant: over 50 individuals.)																

Table 3. Some physicochemical characteristics of Lake Sapanca, and the preference of *P. truncatum* according to the literature.

Variable	Lake Sapanca		Jersabek and Leitner (2013)
	min-max	min-max	min-max
	Jan.2009-May.2010	May.2010*	
Water temperature (°C)	7.91-18.01	12.04-14.54	5-10
Dissolved oxygen (mg L ⁻¹)	2.98-9.73	7.2-7.91	10.4-11.5
pH	7.22-8.94	8.35-8.5	6.4-8.3
Conductivity (µS cm ⁻¹)	226.57-265.57	264.8-265.57	250-340
TDS (mg L ⁻¹)	147.14-172.71	172-172.71	270-270

*: The sampling date with a high abundance of *P. truncatum* in the present study.

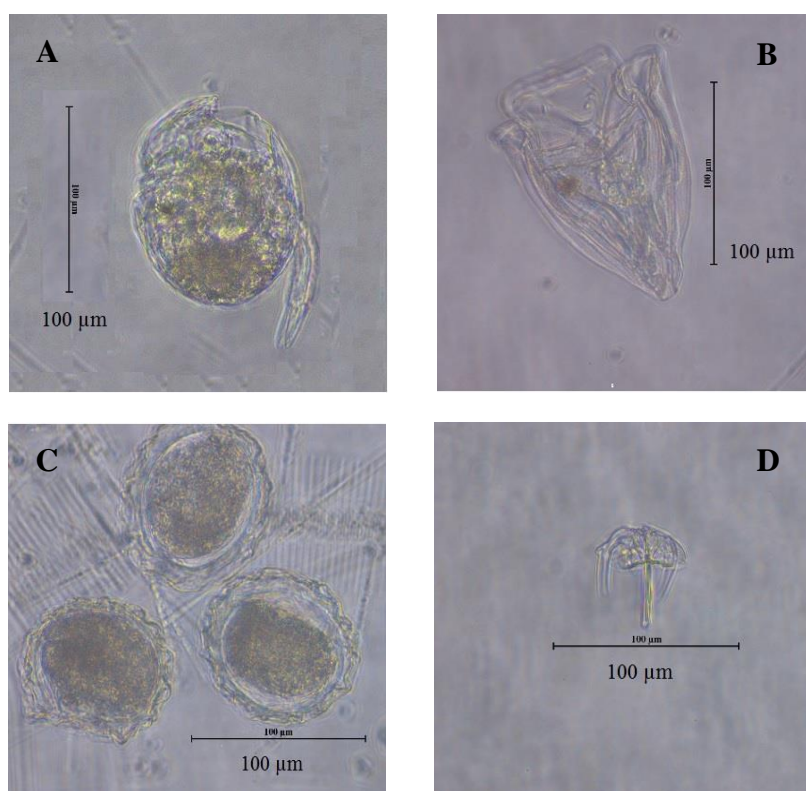


Figure 2. General view of *P. truncatum* (A and B). The eggs of *P. truncatum* (C) and Trophi of the species (D). (Photographs were taken at x40 magnification).

Acknowledgements

This study was financially supported by İstanbul University Administrative Secretariat of Scientific Research Project Number: 992/090597.

References

- Akçaalan R, Albay M, Gürevin C, Çevik F. 2007. The influence of environmental conditions on the morphological variability of phytoplankton in an oligo-mesotrophic Turkish lake. *Ann Limnol Int J Limnol.* 43:21–28. doi: [10.1051/limn/2007024](https://doi.org/10.1051/limn/2007024)
- Albay M, Akçaalan R, Tüfekci H, Metcalf JS, Beattie KA, Codd GA. 2003. Depth profiles of cyanobacterial hepatotoxins (microcystins) in three Turkish freshwater lakes. *Hydrobiologia.* 505:89-95. doi: [10.1023/B:HYDR.0000007297.29998.5f](https://doi.org/10.1023/B:HYDR.0000007297.29998.5f)
- Altındağ A, Kaya M, Ergönül MB, Yiğit S. 2005. Six rotifer species new for the Turkish fauna. *Zool Middle East.* 36:99-104. doi: [10.1080/09397140.2005.10638132](https://doi.org/10.1080/09397140.2005.10638132)
- Altındağ A, Buyurgan O, Kaya M, Özdemir E, Dirican S. 2009. A survey on some physico-chemical parameters and zooplankton structure in Karaman Stream, Antalya, Turkey. *J Anim Vet Adv.* 8(9):1710-1716.
- Barbiero, RP, Warren, GJ. 2011. Rotifer communities in the Laurentian Great Lakes, 1983–2006 and factors affecting their composition. *J Great Lakes Res.* 37(3):528–540. doi: [10.1016/j.jglr.2011.04.007](https://doi.org/10.1016/j.jglr.2011.04.007)
- Bekleyen A, Gökot B, Varol M. 2011. Thirty-four new records and the diversity of the Rotifera in the Turkish part of the Tigris River watershed, with remarks on biogeographically interesting taxa. *Sci Res Essays.* 6(30):6270–6284. doi: [10.5897/SRE11.355](https://doi.org/10.5897/SRE11.355)

- Bonecker CC, Da Costa CL, Velho LFM, Lansac-Tôha FA. 2005. Diversity and abundance of the planktonic rotifers in different environments of the Upper Paraná River floodplain (Paraná State - Mato Grosso do Sul State, Brazil). *Hydrobiologia*. 546(1):405–414. doi: 10.1007/s10750.005.4283.2
- Bonecker CC, Aoyagu, ASM, Santo, RM. 2009. The impact of impoundment on the rotifer communities in two tropical floodplain environments: interannual pulse variations. *Braz J Biol*. 69(2):529-537. doi: 10.1590/S1519-69842009000300008
- Cadjo S, Miletic A, Djurkovic A. 2007. Zooplankton of the Potpec reservoir and the saprobiological analysis of water quality. *Desalination*. 213(1-3):24–28. doi: 10.1016/j.desal.2006.02.099
- Daday E. 1903. Mikroskopische süßwassertiere aus Kleinasien, Sitzungsber. Akademie der Wissenschaften in Wien 112, Abt. 1:139-167.
- Doulka E, Kehayias G. 2008. Spatial and temporal distribution of zooplankton in Lake Trichonis (Greece). *J Nat Hist*. 42(5-8):575-595. doi: 10.1080/00222930701835555
- DSI (State Water Works) 1986. Gala Gölü Limnolojik Araştırma Raporu. Ankara: T.C. Enerji ve Tabii Kaynaklar Bakanlığı 126 p. [in Turkish]
- DSI (State Water Works) 1998. Su kalitesi kontrolü, izlenmesi ve özel çalışmalar: Sapanca Gölü ve drenaj alanı. Ankara: Devlet Su İşleri Yayını 228-300 p. [in Turkish]
- Edmondson WT. 1960. Reproductive rates of rotifers in natural populations. *Mem. Ist. ital. Idrobiol*. 12:21-77. doi: 10.2307/1942218
- Geldiay R. 1949. Çubuk Barajı ve Emir Gölünün makro ve mikro faunasının mukayeseli incelenmesi. Ankara: Ankara Üniversitesi Fen Fakültesi Mecmuası, 2:106 pp. [in Turkish]
- Geldiay R, Tareen IU. 1972. Preliminary survey of Gölçük, a eutrophic mountain lake in western Turkey. *E.Ü. Fen Fak. İlimi Raporlar Ser. No. 138*, 21 pp. [in Turkish]
- Hauer J. 1957. Rotatorien aus dem plankton des Van Sees. *Arch Hydrobiol*. 53(1):23-29.
- Hollowday ED. 2002. Family Synchaetidae Hudson & Gosse, 1886. Rotifera. Volume 6: Asplanchnidae, Gastropodidae, Lindiidae, Microcodidae, Synchaetidae, Trochosphaeridae and Filinia. 18:87-211.
- Jersabek CD, Leitner MF. 2013. The Rotifer World Catalog. World Wide Web electronic publication; [cited 2015 May 01]. Available from <http://www.rotifera.hausdernatur.at>
- Kaya M, Altındağ A, Sezen G. 2008. The genus *Sinantherina* Bory de St. Vincent, 1826, a new record for the Turkish rotifer fauna. *Turk J Zool*. 32(1):71-74.
- Kaya M, Altındağ A. 2009. New Record Rotifer Species for the Turkish Fauna. *Turk J Zool*. 33(1):7-12. doi: 10.3906/zoo-0706-10
- Kaya M., Herniou EA, Barraclough TG, Fontaneto D. 2009. A faunistic survey of bdelloid rotifers in Turkey. *Zool Middle East*. 48(1):114-116. doi: 10.1080/09397140.2009.10638379
- Kehayias G, Chalkia E, Chalkia S, Nistikakis G, Zacharias I, Zotos A. 2008. Zooplankton dynamics in the upstream part of Stratos reservoir (Greece). *Biologia*. 63(5):699-710. doi: 10.2478/s11756-008-0129-5
- Kolisko WR. 1974. Planktonic Rotifers Biology and Taxonomy Biological Station. Stuttgart: Lunz of The Austrian Academy of Science 974 p.
- Koste W. 1978. Rotatoria. Die Raedertier Mitteleuropas, Ein Bestimmungswerk Begründet von Max Voigt. Überordnung Monogononta. Gebraider Borntraeger, Berlin, Stuttgart 673 p.
- Koste W. 1982. *Ploesoma truncatum*, ein räuberisches Plankton-Rädertier. *Mikrokosmos*. 71:167-173.
- Koste W, Terlutter H. 2001. Die Rotatorienfauna einiger Gewässer des Naturschutzgebietes "Heiliges Meer" im Kreis Steinfurt Osnabrücker Naturwissenschaftliche Mitteilungen Band, 27:113–177.
- Lin Q-Q, Duan S-S, Hu R, Han BP. 2003. Zooplankton Distribution in Tropical Reservoirs, South China. *Int Rev Hydrobiol*. 88(6):602–613. doi: 10.1002/iroh.200310625
- Mann KA. 1940. Über pelagische copepoden Türkischer Seen. *Int Rev Ges Hydrobiol*. 40(1-2):1-87. doi: 10.1002/iroh.19400400102
- Margaritora FG, Cottorelli V. 1970. Le biocenosi planctoniche estive del lago Abant (Turchia Asiatica, Regione del Mar Nero). *Rend Ist Lomb Sci Lett*. 104(B):170-190.
- Margaritora FG, Stella E, Mastrantuono L. 1977. Contributo allo studio della fauna ad entomotracci delle acque temporanee della Turchia Asiatica. *Uni di Perugia Inst della Rivista Bio*, 16:151-172.
- Molloy DP, Glockling SL, Siegfried CA, Beakes GW, James TY, Mastitsky SE, Wurdak E, Giamberinih L, Gaylo MJ, Nemeth MJ. 2014. *Aquastella* gen. nov.: A new genus of saprolegniaceous oomycete rotifer parasites related to *Aphanomyces*, with unique sporangial outgrowths. *Fungal Biology*. 118(7):544-558. doi: 10.1016/j.funbio.2014.01.007
- Okgerman H. 2008. Sapanca Gölü zooplanktonu. In: Okgerman H, Altuğ G, editors. Sapanca Gölü'ne bilimsel açıdan bakış. İstanbul: Türkn Deniz Araştırmaları Vakfı Yayınları. p. 65-74. [in Turkish]
- Ongan T. 1982. Güney Marmara Bölgesi İçsu Ürünleri Geliştirme ve Su Kaynaklarının Envanteri Projesi. Sapanca: İÜ Rekt Hidb Araş Enst Yayın [in Turkish]
- Pontin MR. 1978. A Key to the Freshwater Planktonic and Semi-Planktonic Rotifera of the British Isles. Freshwater Biological Association Scientific Publication, No:38.
- Rahe R, Worthmann H. 1985. Marmara Bölgesi İç Su Geliştirme Projesi. Eschborn: Project No.: 78-2032.7.
- Segers H, Emir N, Mertens J. 1992. Rotifera from North and Northeast Anatolia (Turkey). *Hydrobiologia*. 245(3):179-189. doi: 10.1007/BF00006159
- Sládeček V. 1983. Rotifers as indicators of water quality. *Hydrobiologia*, 100(1):169-201.
- Swadling KM, Pienitz R, Nogrady T. 2000. Zooplankton community composition of lakes in the Yukon and Northwest Territories (Canada): relationship to

- physical and chemical limnology. *Hydrobiologia*. 431(2-3): 211–224. doi: [10.1023/A:1004056715976](https://doi.org/10.1023/A:1004056715976)
- Sudzuki M, Watanabe K, Suzuki K, Narita K. 1983. Occurrence of Rotifera in the field under natural and intentionally-changed conditions. *Hydrobiologia*. 14:341-347. doi: [10.1007/BF00045988](https://doi.org/10.1007/BF00045988)
- Telesh IV. 1995. Rotifer assemblages in the Neva Bay, Russia: principles of formation, present state and perspectives. *Hydrobiologia*. 313/314:57-62.
- Tokat M. 1975. İznik ve Sapanca Gölleri'nde mevcut rotatorların yayılışları hakkında ön çalışmalar. Paper presented at: TÜBİTAK V. Bilim Kongresi, İstanbul, Turkey. [in Turkish]
- Tokat M. 1976. Hazar (Gölcük) Gölü rotatorları ve yayılışları. İ.Ü.Fen Fak. Hidrobiyoloji Enst.Yayın. 18: 13 pp. [in Turkish]
- Ustaoğlu MR. 2004. A Check-list for Zooplankton of Turkish Inland Waters. Rotifers. *E.U J Fish Aquat Sci*. 21(3-4):191-199.
- Ustaoğlu MR, Altındağ A, Kaya M, Akbulut N, Bozkurt A, Özdemir Mis D, Atasagun S, Erdoğan S, Bekleyen A, Saler S, Okgerman HC. 2012. A Checklist of Turkish Rotifers. *Turk J Zool*. 36(5):607-622. doi: [10.3906/zoo-1110-1](https://doi.org/10.3906/zoo-1110-1)
- Vavra V. 1905. Rotatorian and Crustacean. *Annalen des K.K. Naturhistorischen Hofmuseums*, 20:106-113.
- Zederbauer E, Brehm V. 1907. Das plankton einiger seen Kleinasiens. *Arch Hydrobiol. Plankton*, 3(1):92-99.
- Zhaou S, Huang X, Cai Q. 2009. Temporal and Spatial Distributions of Rotifers in Xiangxi Bay of the Three Gorges Reservoir, China. *Int Rev Hydrobiol*. 94(5):542-559. doi: [10.1002/iroh.200811107](https://doi.org/10.1002/iroh.200811107)